



Town of Montague Complete Streets Tier 3 Project Plan

Community Input Session

September 5, 2024, 6:00PM

What is a Complete Street?



A Complete Street is safe, comfortable and convenient for travel via foot, bicycle, transit and automobile for anyone regardless of age or ability.

AGENDA

- **COMPLETE STREETS FUNDING PROGRAM OVERVIEW**
- **PROJECT AREA**
- **EXISTING CONDITIONS**
- **TYPICAL COMPLETE STREETS TREATMENTS**
- **PROPOSED IMPROVEMENTS**
- **QUESTIONS AND COMMENTS**

MassDOT's Complete Streets Funding Program



Board of Selectmen
Town of Montague
1 Avenue A
Turners Falls, MA 01376
(413) 863-3200 xt. 108
FAX: (413) 863-3231

COMPLETE STREETS POLICY
ADOPTED: 12/11/2017

Vision and Purpose:

Complete Streets is a transportation system that provides safety and convenience for all users, including pedestrians, bicyclists, transit users, and motorists. It is a comprehensive approach to transportation planning that recognizes the need for a variety of transportation modes and provides for the safe and efficient movement of all users. Complete Streets are designed to be safe, comfortable, and convenient for all users, and they provide a variety of benefits, including improved air quality, reduced traffic congestion, and increased economic activity.

The Town of Montague is committed to providing a safe and efficient transportation system for all users. This policy provides a framework for the design and construction of complete streets that meet the needs of all users and provide a variety of benefits to the community.

The Town of Montague will not limit the use of any street to a single mode of transportation. All streets are designed to be safe and convenient for all users, and they provide a variety of benefits to the community.

The Town of Montague will provide a comprehensive and coordinated transportation system that meets the needs of all users. All projects, including new developments, are opportunities to implement Complete Streets design.

Tier 1 – Complete Streets Policy Adopted (2017)

massDOT Complete Streets Funding Program Project Prioritization Plan

Municipality: Montague Date: 8/9/2018
MassDOT District: 2 Name/Title: Walter Ramsey, Town Planner

Rank	Project Name	Project Description	Complete Streets Location	
			Project Start Location: X,Y Coordinates (MA State Plane meter)	Project End Location: X,Y Coordinates (MA State Plane meter)
1	Main Street Pedestrian Improvement	• Improve pedestrian safety and accessibility along Main Street from the intersection of Avenue A to the intersection of 7th Street.	X 42 537314, Y -72 536201	
2	Pedestrian and Bicycle Accommodation Canal Street and Bike Path	• Provide pedestrian and bicycle accommodations along Canal Street and the bike path.	X 42 406353, Y -72 560936	
3	7th Street Bicycle and Pedestrian Accommodation	• Install bike lane along 7th Street from the intersection of Avenue A to the intersection of Power Street. • Install ADA curb ramps at the intersection of J Street and 7th Street (P2, P3). • Extend the sidewalk in the pedestrian plaza area along 7th Street (north side) from the intersection of Avenue A and 7th Street further west and make a new crosswalk that is a further from the intersection (P5, P9). • Install ADA curb ramps at the intersection of J Street and 7th Street (P2, P3).	X 42 607196, Y -72 561068	X 42 605630, Y -72 559650

Tier 2 – Complete Streets Prioritization Plan Completed (2018)

massDOT Complete Streets Funding Program Tier 3 Project Application

Municipality: Montague
MassDOT District: 2
Name: _____
Title: _____
Date: _____

Tier 3 – Funding Request up to \$500,000 (2024)

A Complete Street is safe, comfortable and convenient for travel via foot, bicycle, transit and automobile for anyone regardless of age or ability.

Complete Streets Project Eligibility

■ PEDESTRIAN FACILITIES

- New and/or repaired sidewalks
- Raised crosswalks
- Bump outs and median islands
- ADA curb ramps
- RRFB
- Wayfinding signage

■ TRAFFIC AND SAFETY

- Traffic calming
- Intersection geometry



■ BICYCLE FACILITIES

- Standard/separated bike lanes
- Shared Use Paths
- Intersection improvements
- Shared roadways
- Bike parking
- Wayfinding signage

■ TRANSIT FACILITIES

- Ped. connections to transit
- Bus shelters

Complete Streets Previously Approved Funding

Montague receives \$311,000 Complete Streets Grant

To fund 4 projects that will improve walking and cycling in town

Complete Streets is the planning, design, and implementation of transportation systems to provide safety and accessibility to all of its users. This includes pedestrians, bicyclists, transit users, horseback riders, motorists, emergency, commercial vehicles, and any other forms of transportation. Furthermore, Complete Streets principles and initiatives contribute towards the general health, safety, economy, and overall quality of life within a community by improving pedestrian and vehicular connectivity as well as accessibility for users of all ages and abilities.

Montague participates in MassDOT's [Complete Streets Program](#). As components of participation, Montague has adopted a Complete Streets Policy and adopted a Complete Streets Prioritization Plan that identifies 41 potential projects across Montague.

In February 2019 Montague was awarded a \$311,000 Complete Streets Project Grant to implement four priority projects identified in the plan.



Selectboard member Michael Nelson accepts award from Lt. Governor Karyn Polito

FY 2019 \$311,000

- Main Street/Court Street/School Street Pedestrian Improvements
- Pedestrian and Transit Improvements on Millers Falls Rd/Unity St/ High St
- Bicycle and Pedestrian Improvements at Avenue A/ First Street
- Bicycle Accommodation on Avenue A and Montague City Road

FY 2021 \$399,000

- Montague Street Pedestrian Improvements
- Turnpike Road Pedestrian Improvements

**TOTAL FUNDING
AWARDED TO DATE
\$710,000**

Project Area – Montague Center



EXISTING CONDITIONS



FRANKLIN
COUNTY BIKEWAY



ON-STREET PARKING



TRANSIT
FACILITIES

EXISTING CONDITIONS



SPEEDING AND
STEEP CURB RAMP
TO SIDEWALK

WIDE PAVEMENT AREAS



LACK OF DEDICATED
BICYCLE FACILITIES

EXISTING CONDITIONS



PARKING ON EDGE OF
COMMON



OUTDATED PEDESTRIAN
CURB RAMPS



NO CROSSWALK
MARKINGS OR
SIGNAGE

Typical Complete Streets Treatments

BIKE LANE



SEPARATED BIKE LANE



SHARED USE/SIDE PATH



RAISED CROSSWALK



RAISED INTERSECTION



RECTANGULAR RAPID FLASHING BEACONS (RRFBs)



Typical Complete Streets Treatments

PAVEMENT ENHANCEMENTS



CROSSWALK WITH MEDIAN



FLASHING LED SIGN

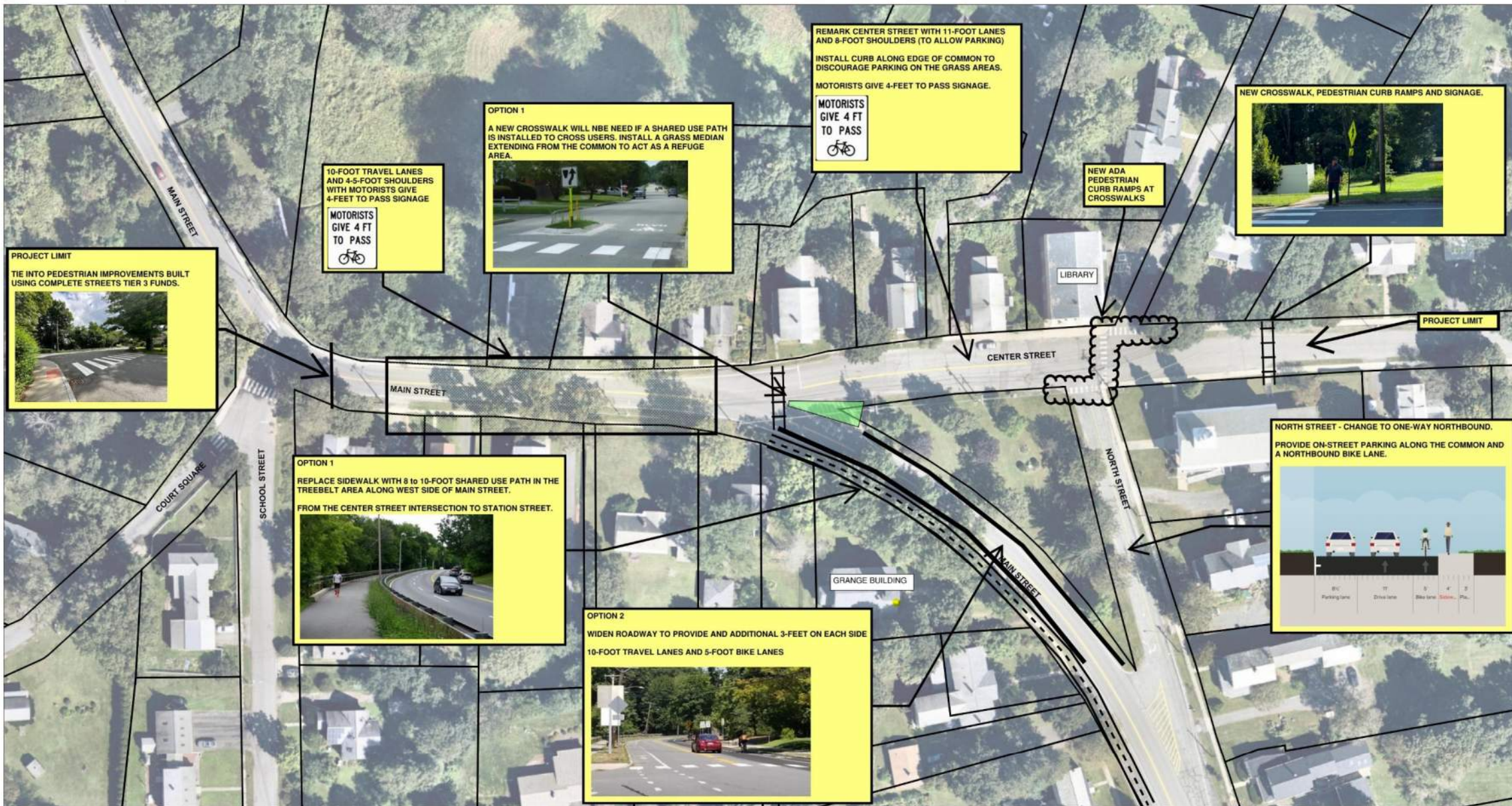


CURB EXTENSIONS



TRANSIT IMPROVEMENTS



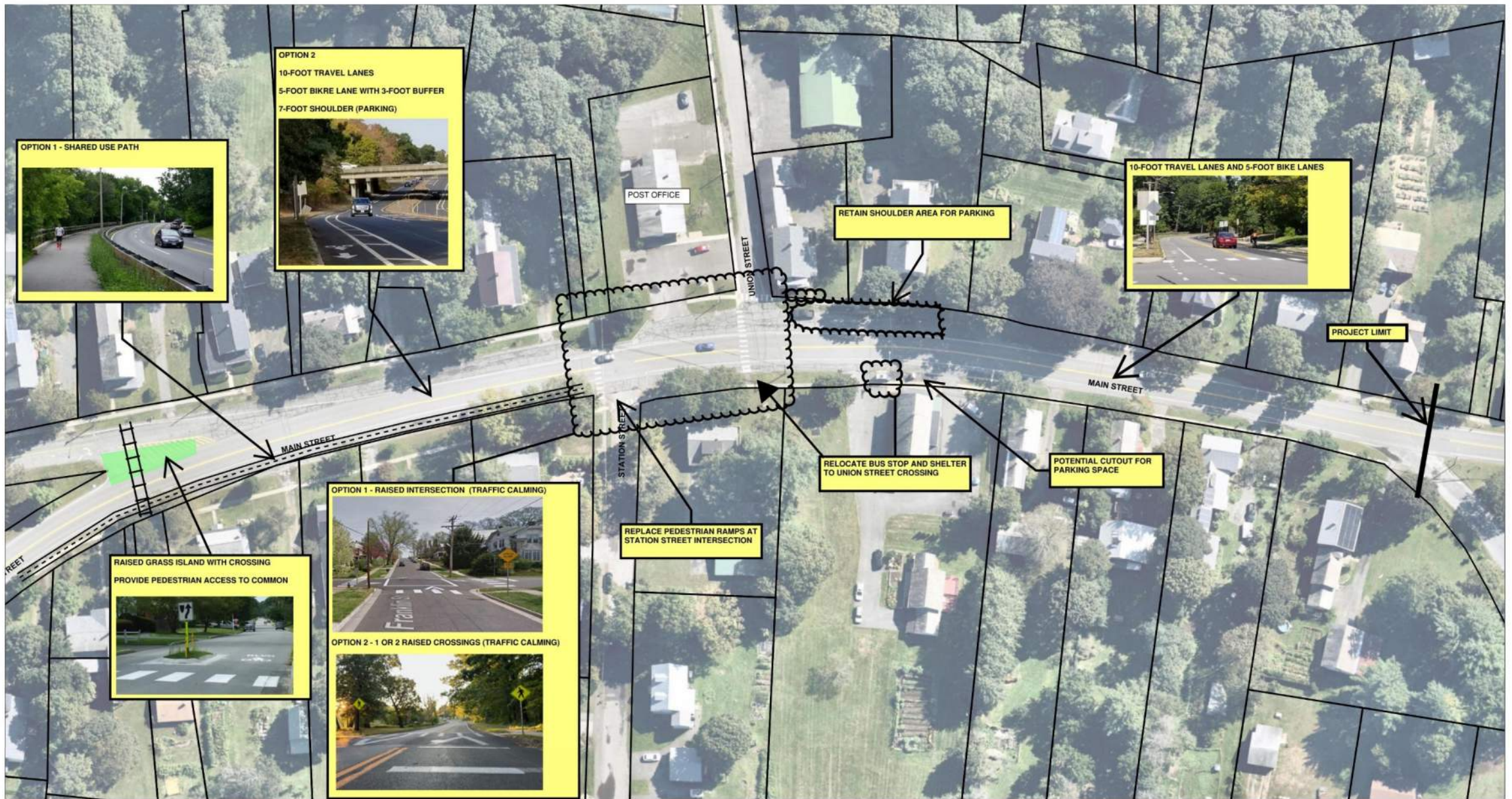


SHEET 1 OF 2

COMPLETE STREETS

MONTAGUE, MA





SHEET 2 OF 2
COMPLETE STREETS
MONTAGUE, MA





QUESTIONS
AND COMMENTS