



Complete Streets FY19



Montague Planning and Conservation Department
Walter Ramsey, AICP

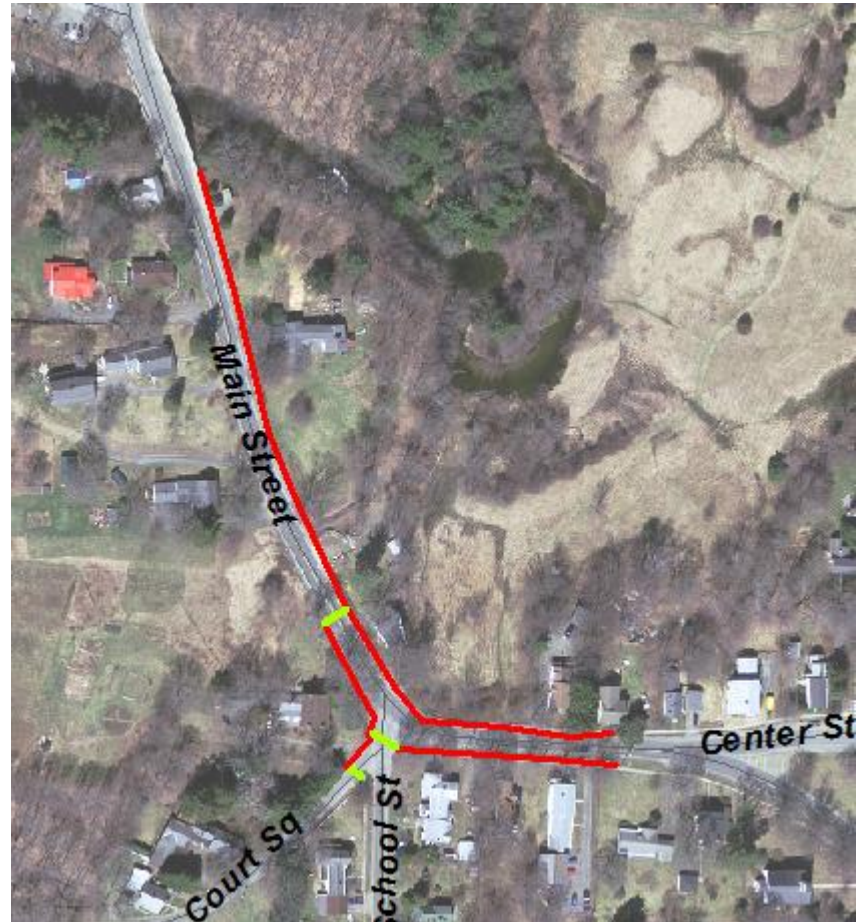
What We Heard

- ▶ Montague Center sidewalks between common and Bookmill area needs to be repaired (x20+)
- ▶ Strong demand for safe routes to schools- network gaps identified to Hillcrest/Sheffield.
- ▶ Intersection at top of Hill/Scotty's needs additional pedestrian safety amenities
- ▶ Bicycle Safety- especially on main roads
- ▶ Traffic flies off new GM Bridge- need to calm traffic entering and leaving downtown Turners Falls.



Main Street Pedestrian Improvements

- ▶ Reconstruct sidewalk from Center to Sawmill River
- ▶ New, safer crosswalk at Main
- ▶ Sidewalk/crosswalk reconfiguration at School and Court Square



Main Street- BEFORE



Improved crossing area

**Sidewalk too narrow
No curb**

MAIN STREET- Before



MAIN STREET



MAIN STREET



MAIN STREETAfter



Millers Falls Rd

- ▶ New sidewalk on Keith St from High to Davis connecting bus stop and neighborhoods to schools(not funded)
- ▶ New pedestrian flashing signs at top of hill
- ▶ Extend sidewalk and crosswalk to Millers Falls Rd Bus Stop



Millers Falls Rd- Before



Millers Falls Rd



Crosswalk at Millers Falls Rd/Turners Falls Rd



Ave A Crosswalk at First Street

- ▶ Curb extension to reduce crossing distance and create gateway
- ▶ Automatic pedestrian signage
- ▶ Sidewalk on 1st to connect Avenue A to L Street



Ave A Crosswalk at First Street

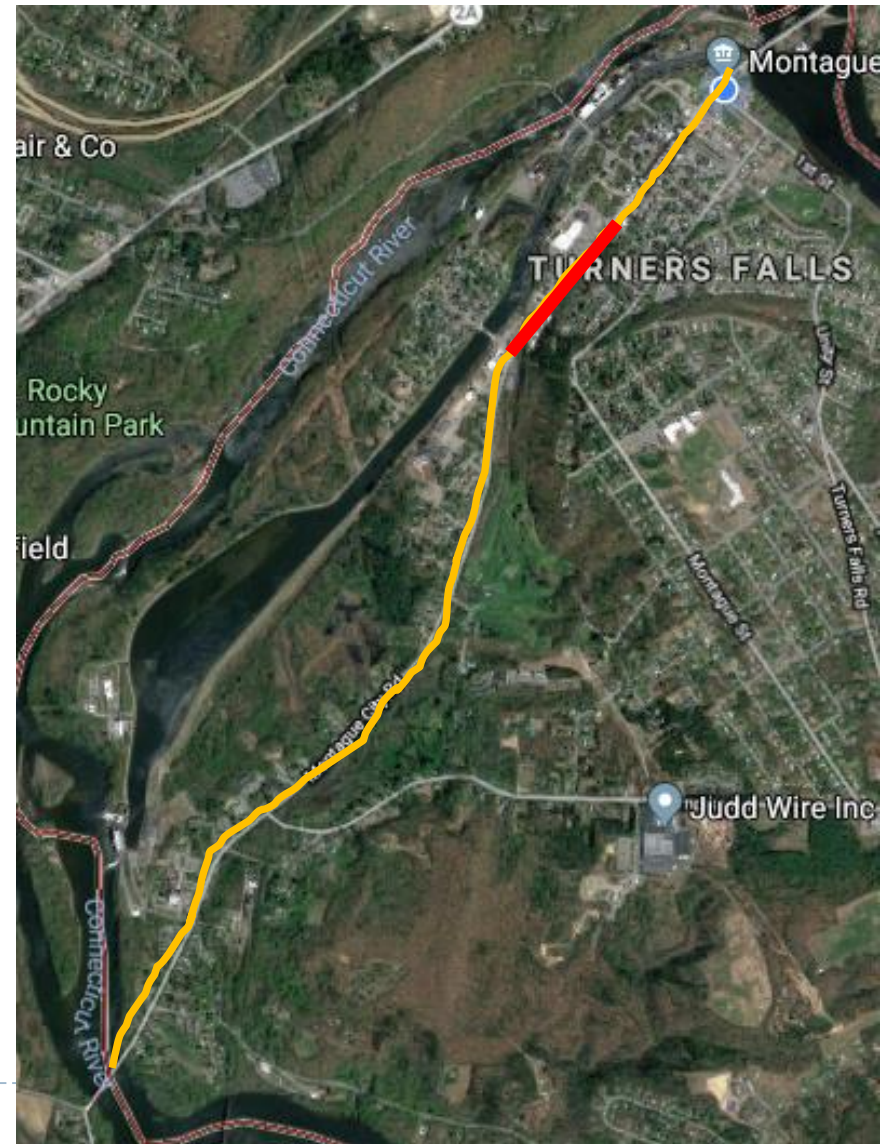


Ave A Crosswalk- After



Bicycle Accommodation from GM Bridge to General Pierce Bridge

- ▶ “Sharrows” Ave A from 1st to 7th Street
- ▶ Separated Bike Lane Ave A from 7th to 11th Street
- ▶ “Sharrows” for length of Montague City Road



Before



After

