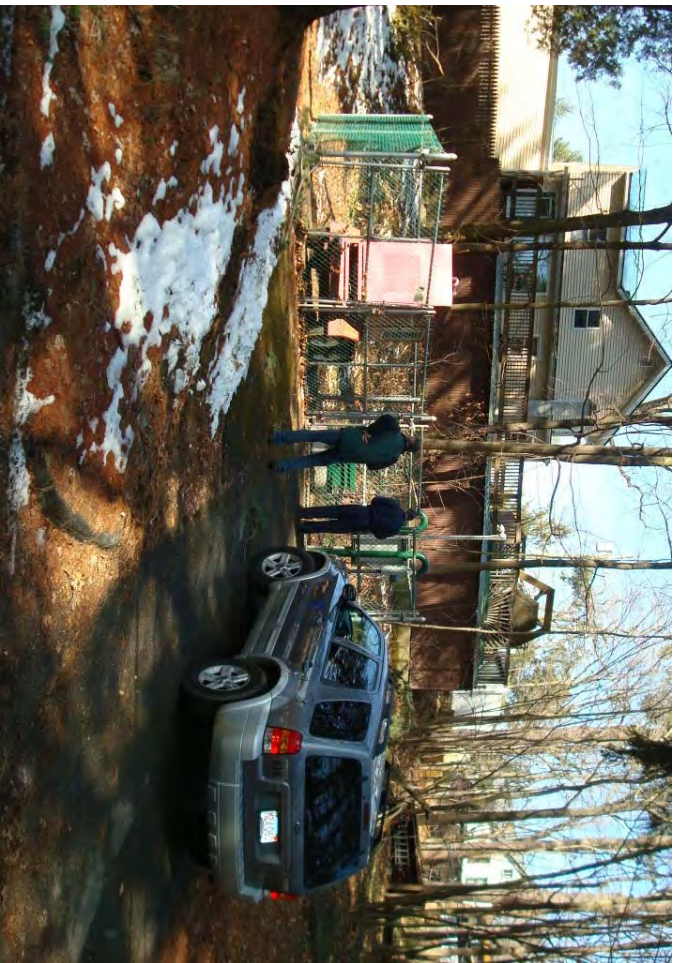




Denton Street Pumping Station

(This page has been left intentionally blank.)

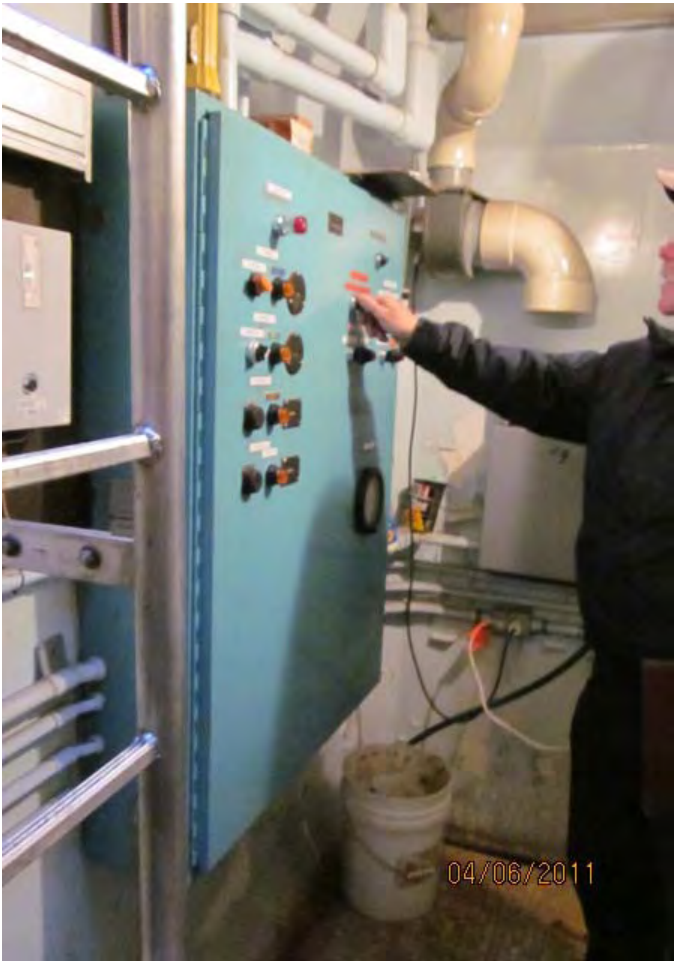














(This page has been left intentionally blank.)



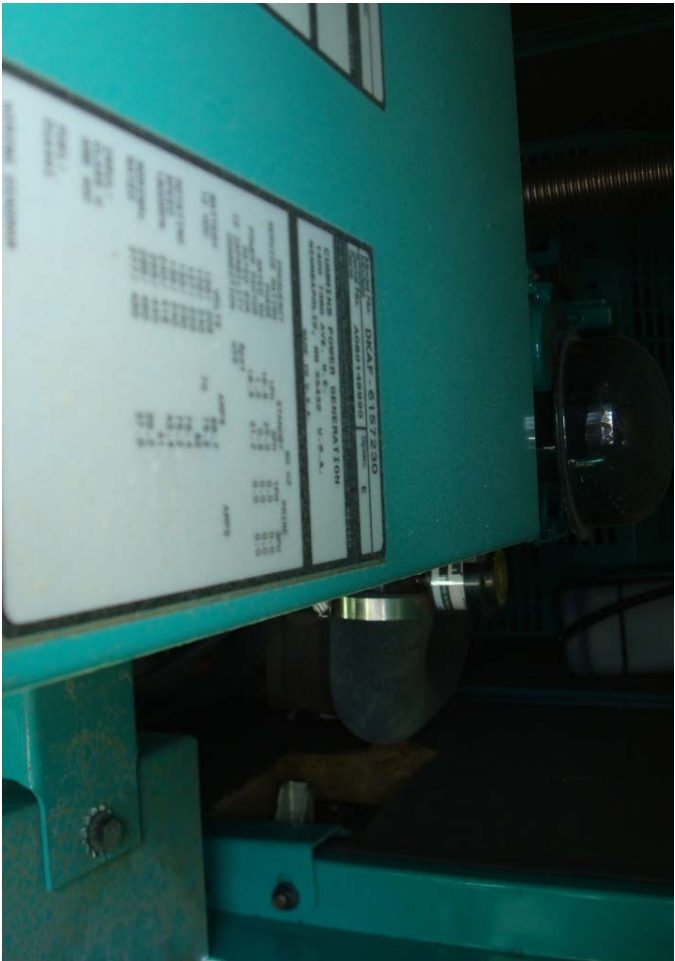
First Street Pumping Station

(This page has been left intentionally blank.)















04/07/2011 13:41



04/07/2011 13:40



04/07/2011 13:50



04/07/2011 13:42

(This page has been left intentionally blank.)

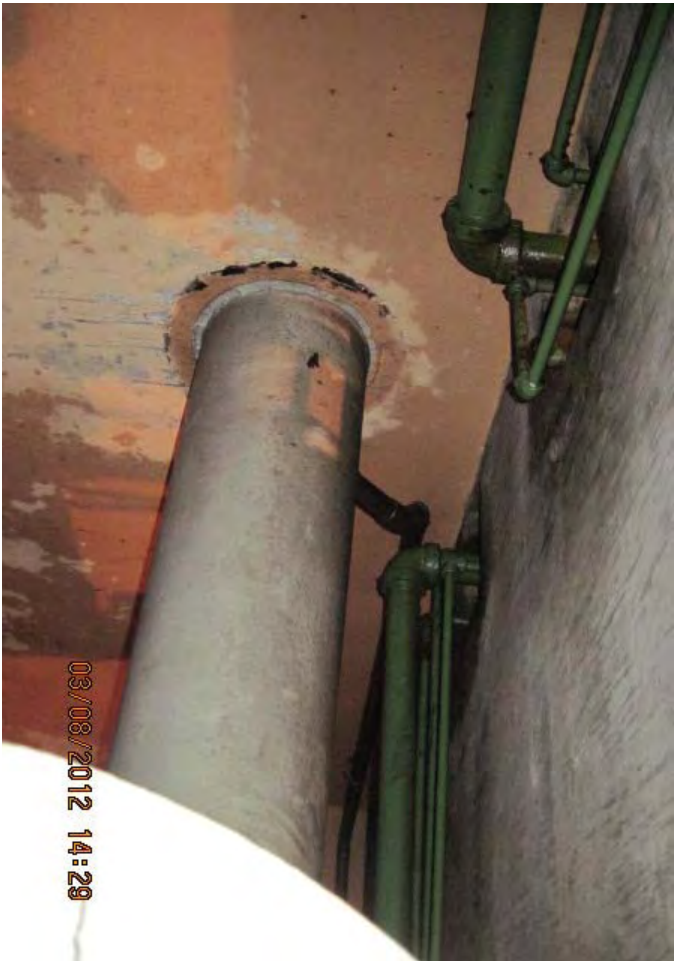


G Street Pumping Station

(This page has been left intentionally blank.)







The Commonwealth of Massachusetts
DEPARTMENT OF PUBLIC SAFETY
 DIVISION OF INSPECTION

Over at Date: 03/08/2012 14:31
 Town of Montague
 Waste Water Treatment Plant
 Greenfield Road,
 Montague, Mass. 01351

Inspected at: 6 Street Pumping Station

CERTIFICATE OF INSPECTION

This is to certify that the pressure vessel herein described has been inspected and approved for use in accordance with the provisions of G. L., C. 146.

Pressure not to exceed 100 pounds per square inch.

Signature: Robert E. Moore
 District Chief of Inspections
 District Engineering Inspector

In accordance with Chapter 146, General Laws, notify this department at 03/08/2012 14:31
 POST UNDER GLASS IN CONSPICUOUS PLACE IN ENGINE OR BOILER ROOM OR ADJACENT TO THE PRESSURE VESSEL.



The Commonwealth of Massachusetts
CERTIFICATE OF INSPECTION

TYPE OF PRESSURE VESSEL: WASTE WATER TREATMENT PLANT
 Name of Inspectee: Montague Wastewater Treatment Plant
 Location of Vessel: Greenfield Road, Montague, Mass.
 Inspected by: Robert E. Moore
 Date: 03/08/2012
 Time: 14:31

This is to certify that the pressure vessel herein described has been inspected and approved for use in accordance with the provisions of G. L., C. 146.

The Inspected Vessel Boiler Inspection and Amusement Company

Pressure not to exceed: 100 pounds per square inch
 Temperature not to exceed: 212 (Boiler Room, Boiler only)
 Inspected by: Robert E. Moore
 Date: 03/08/2012
 Time: 14:31

In accordance with Chapter 146, General Laws, notify this department at 03/08/2012 14:31
 POST UNDER GLASS IN CONSPICUOUS PLACE IN ENGINE OR BOILER ROOM OR ADJACENT TO THE PRESSURE VESSEL.





J Street Pumping Station

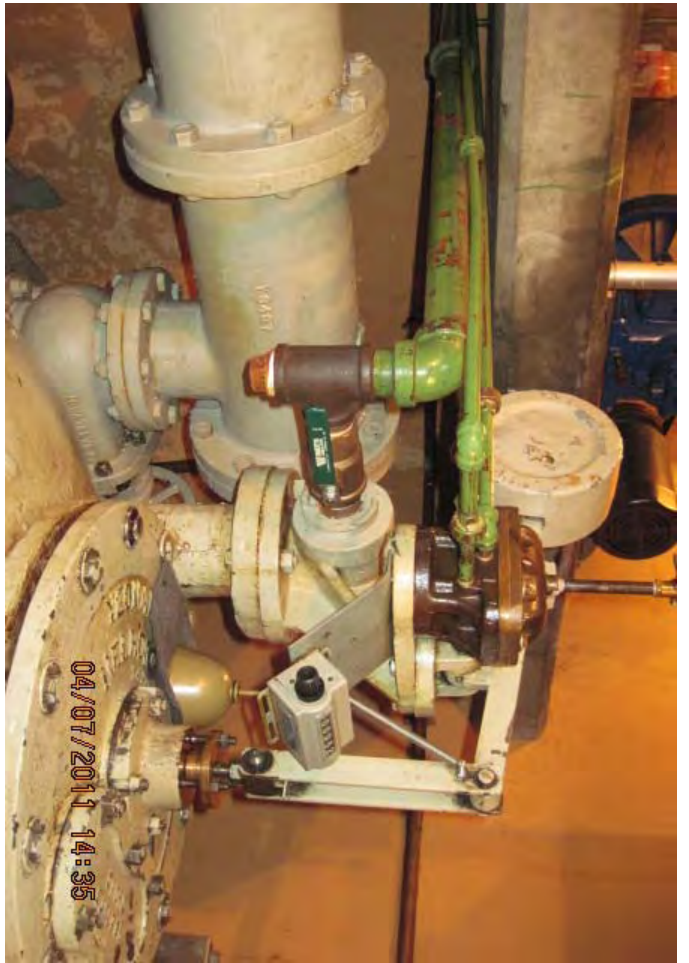
(This page has been left intentionally blank.)



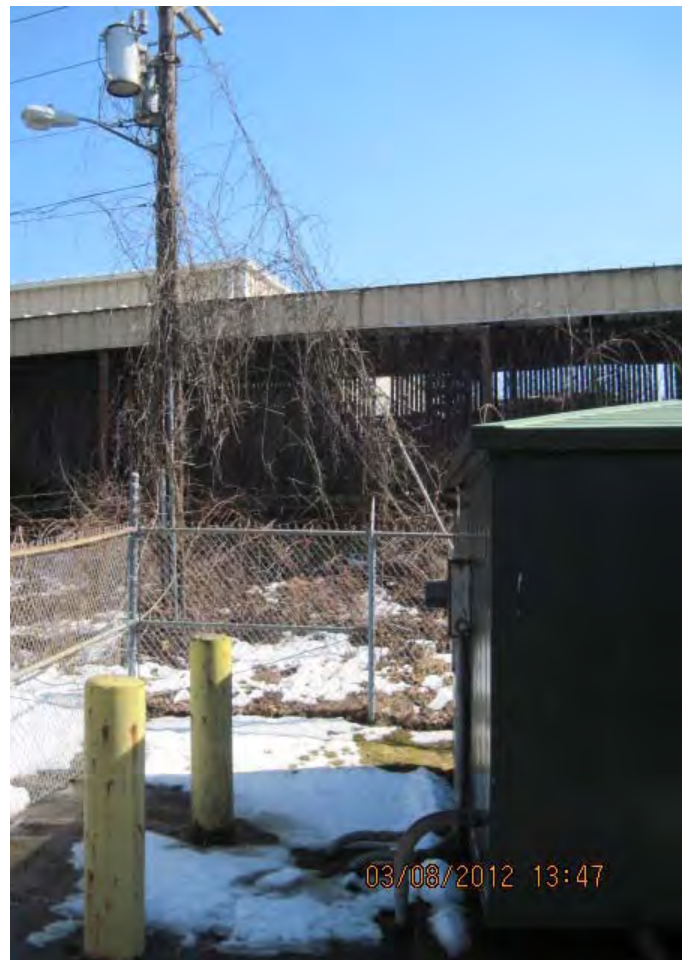




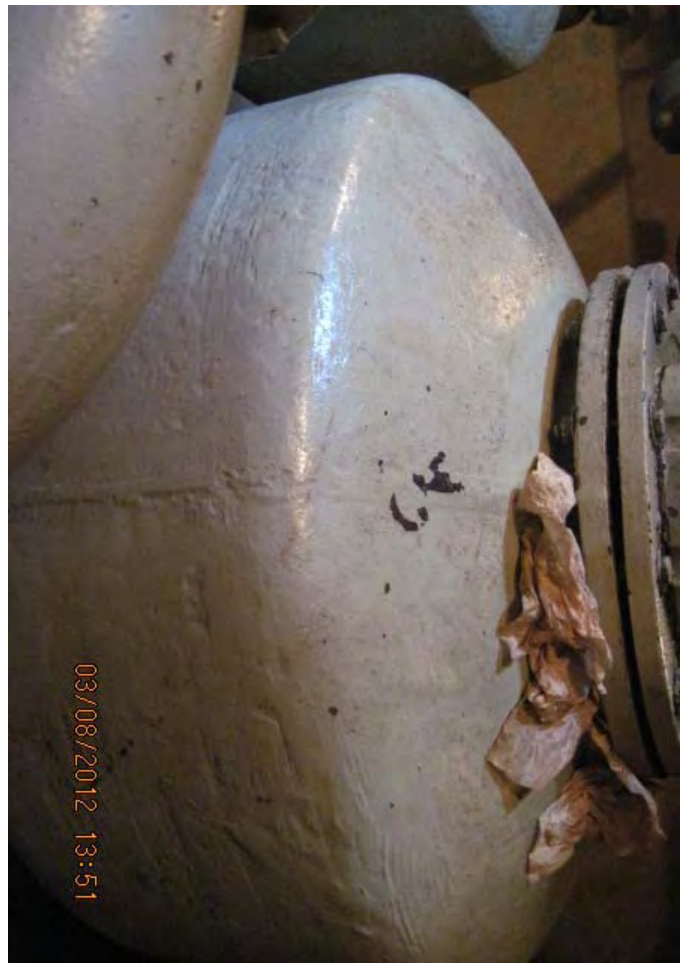




















J Street Force Main Inlet Chamber

(This page has been left intentionally blank.)



(This page has been left intentionally blank.)



G Street Force Main Outlet Chamber

(This page has been left intentionally blank.)



2012/06/28 09:28



2012/06/28 09:44



2012/06/28 09:16



2012/06/28 09:45





(This page has been left intentionally blank.)

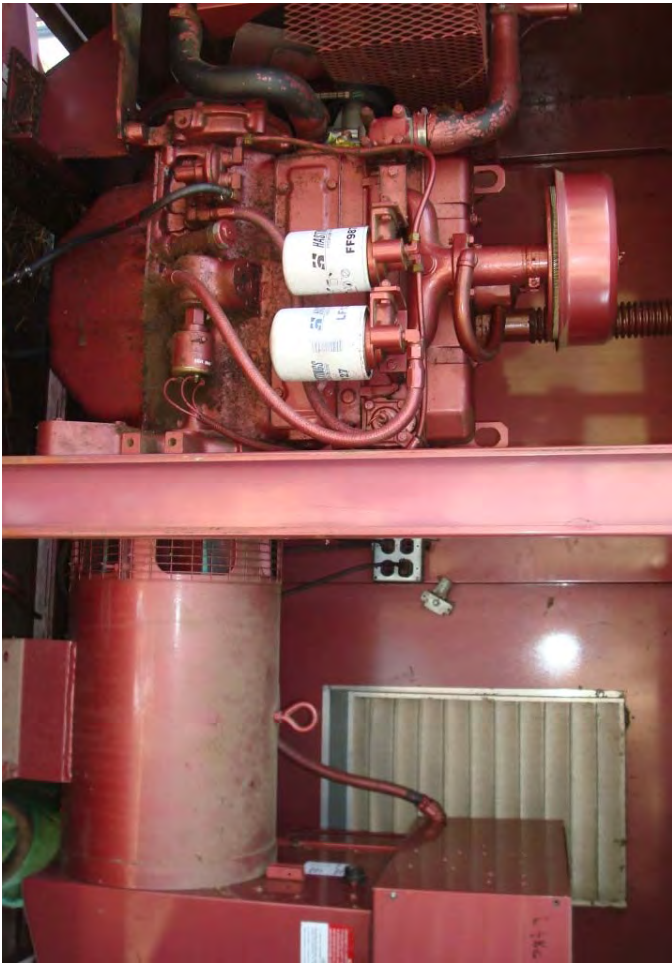


Lake Pleasant Pumping Station

(This page has been left intentionally blank.)





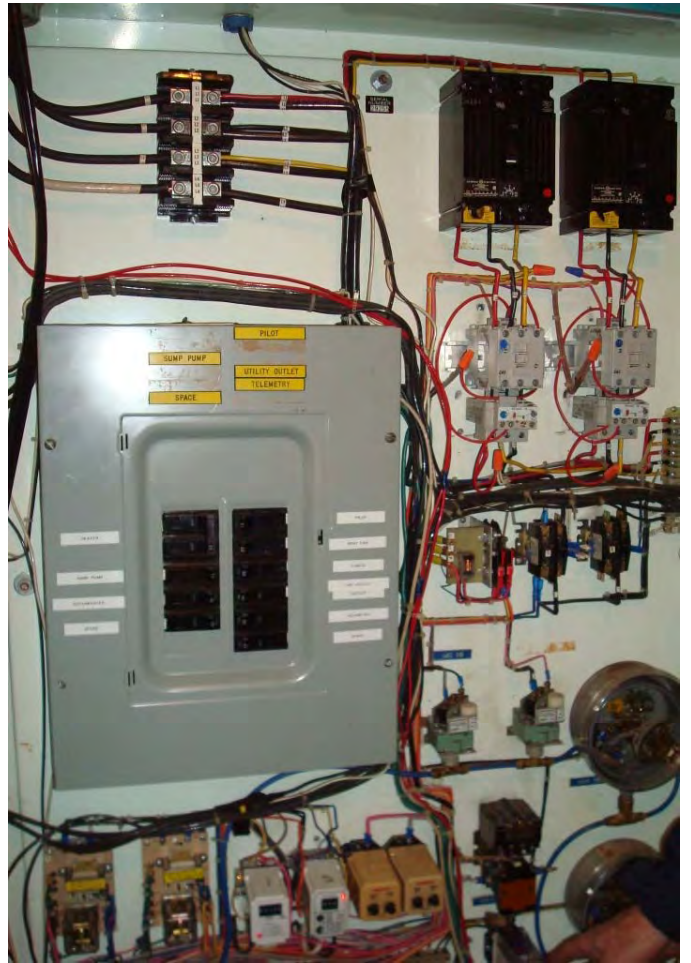














(This page has been left intentionally blank.)

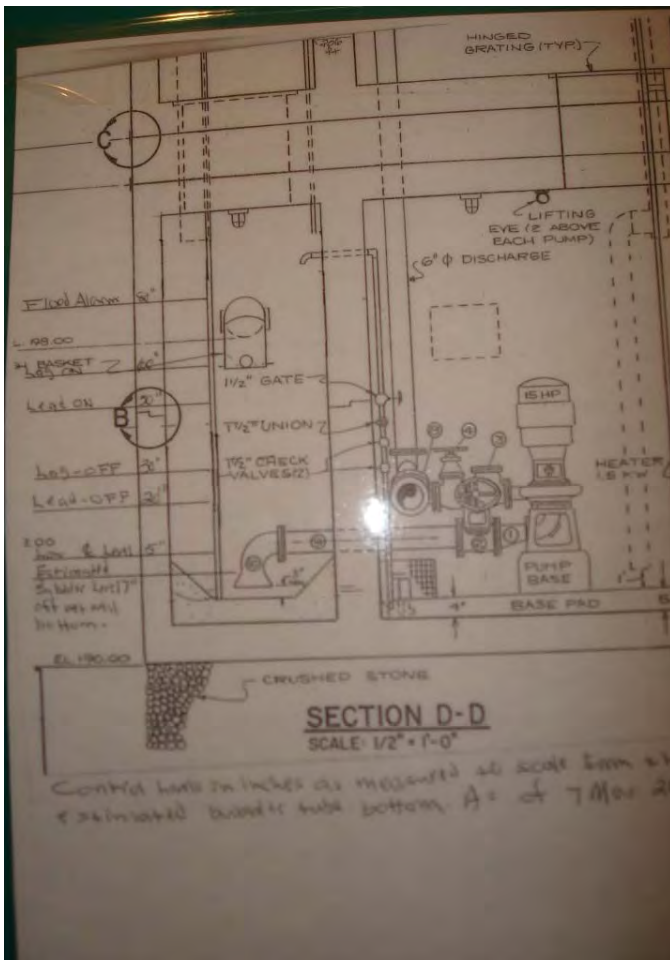


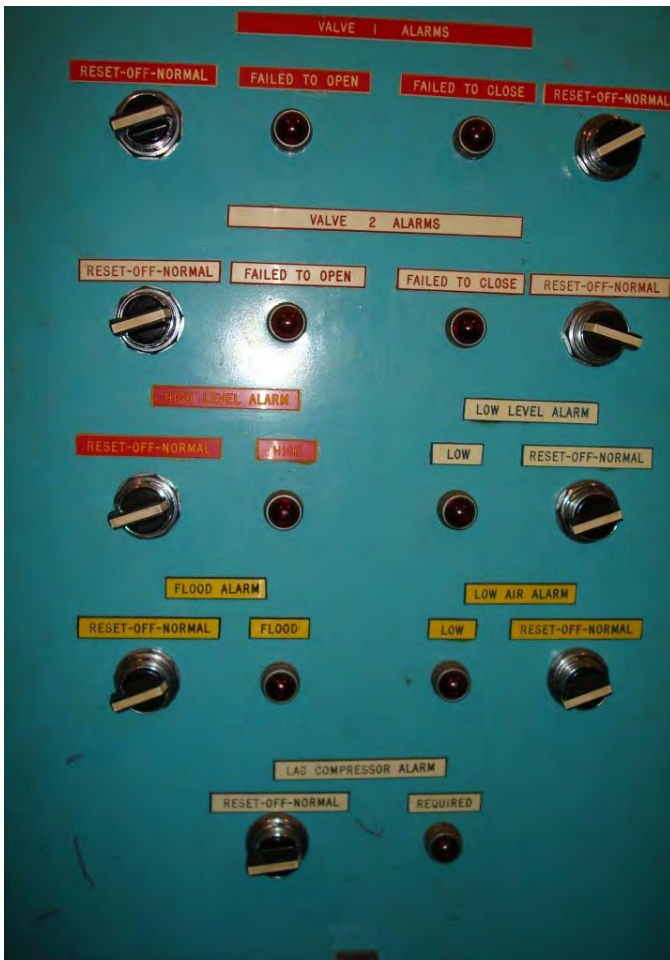
Montague Center Pumping Station

(This page has been left intentionally blank.)

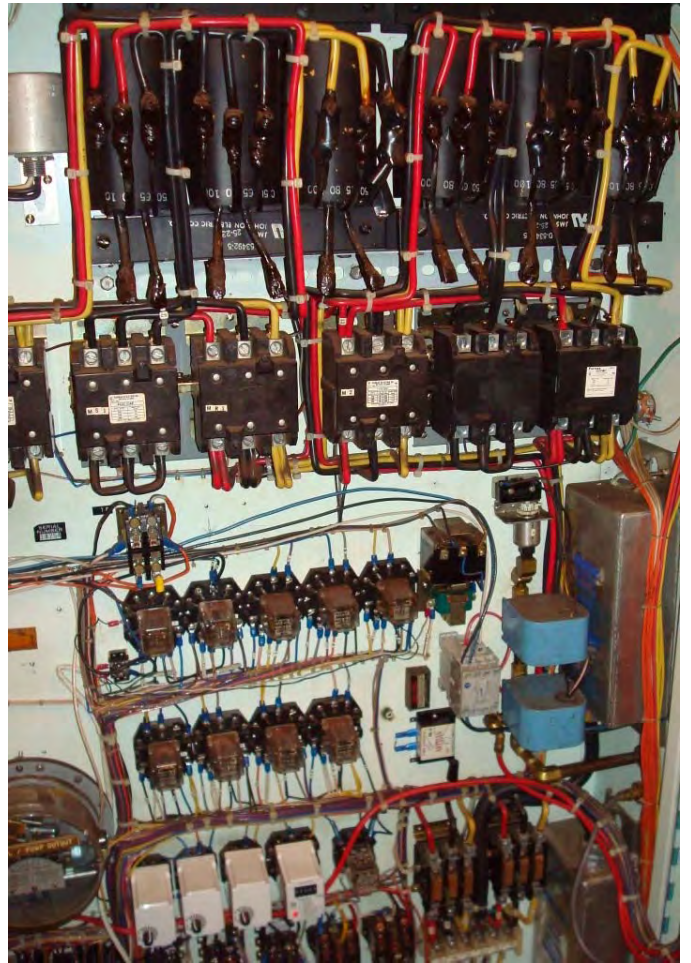






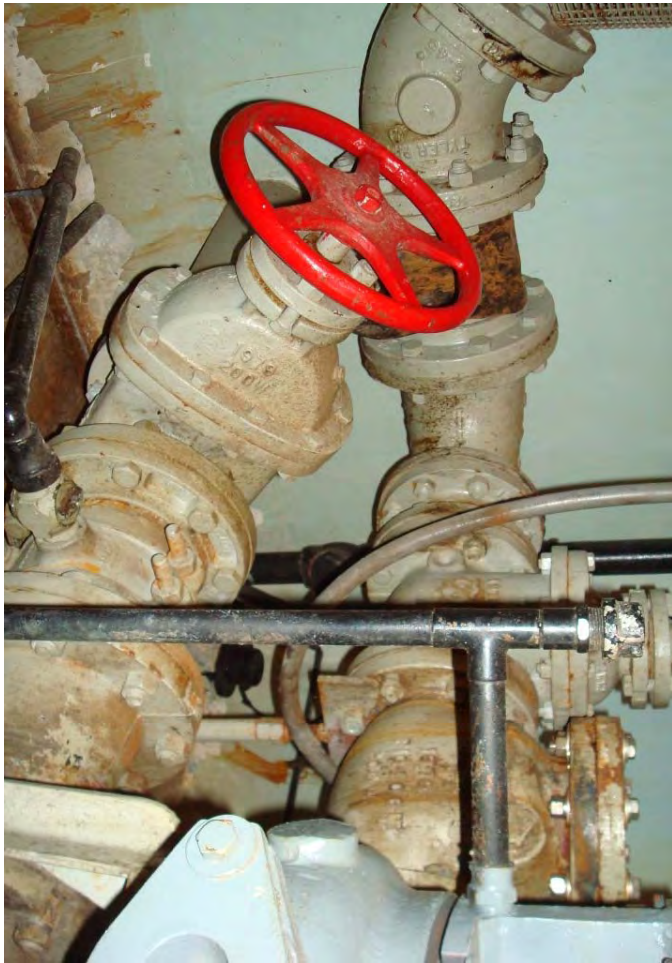


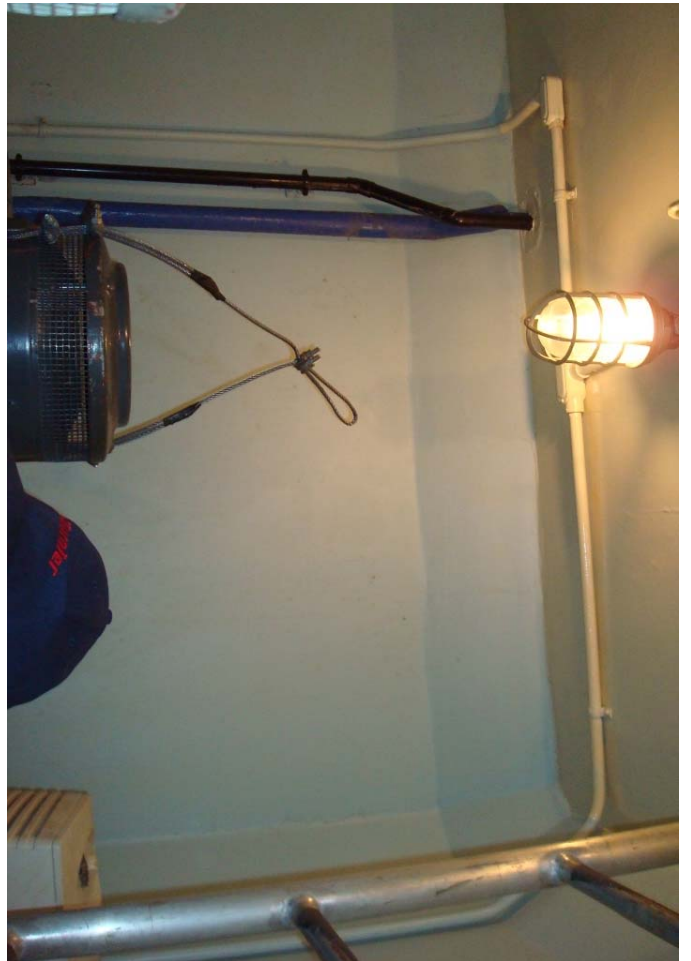




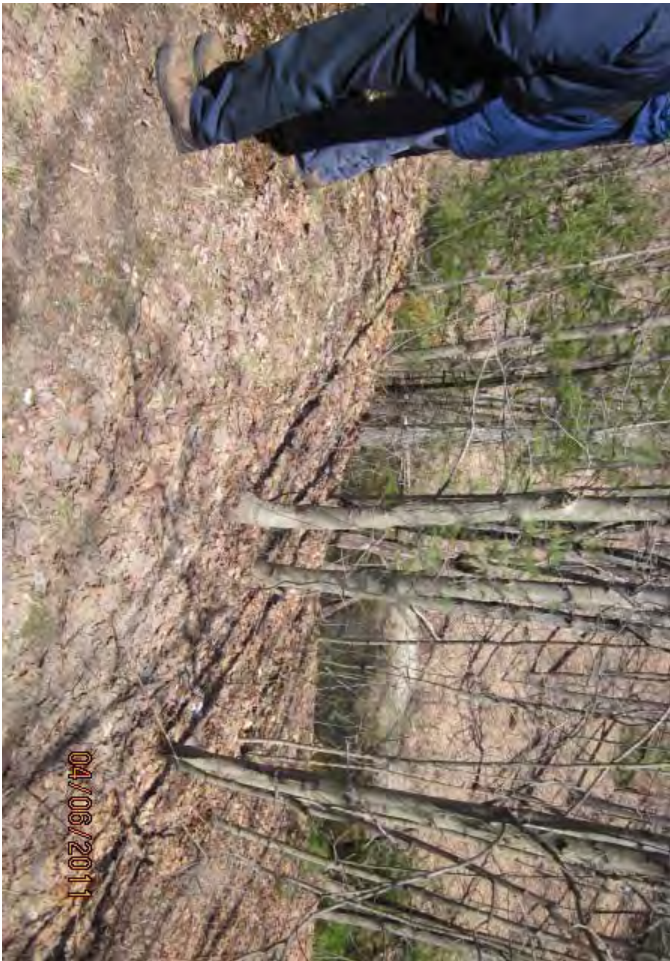






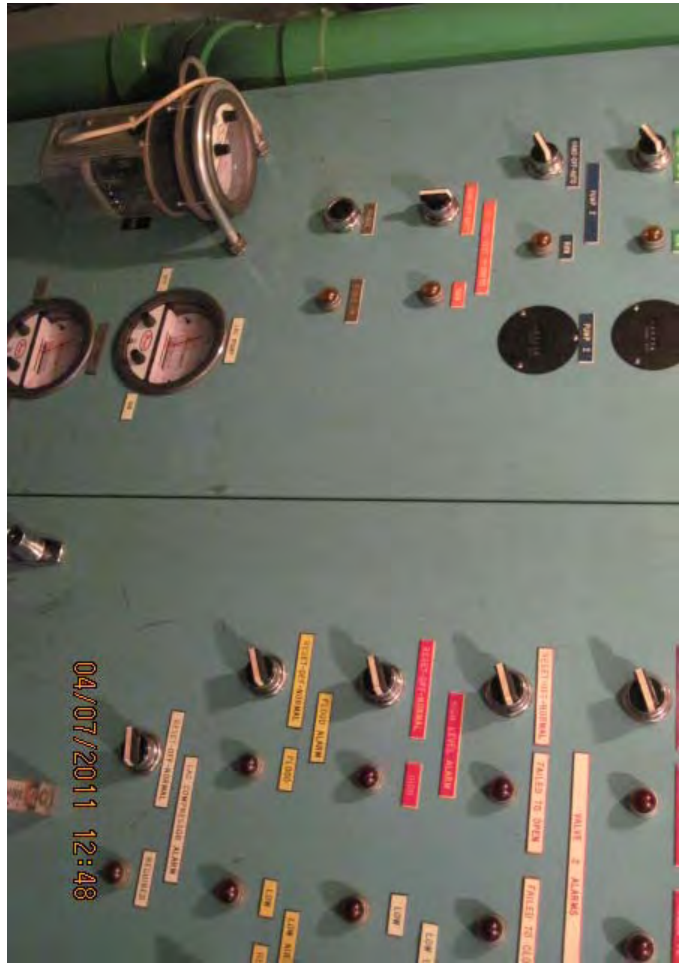
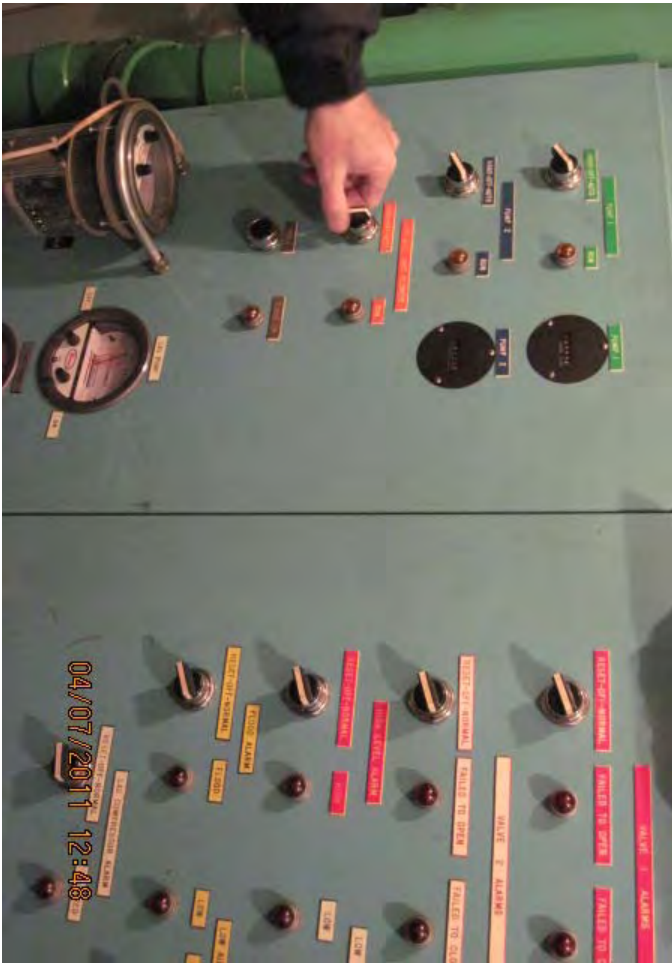
















Poplar Street Pumping Station

(This page has been left intentionally blank.)















Technical School Pumping Station (Industrial Boulevard)

(This page has been left intentionally blank.)







